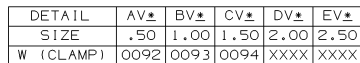
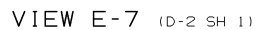


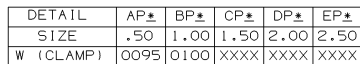
 GENERAL ELECTRIC COMPANY GE Power Generation	SERIAL NO. 01-01-24	SIZE E	CASE CODE 117E5074	DWG NO 117E5074
	DRAWN SARAVANAN.M 01-01-24	SCALE NONE	SHEET 2	

REVISE ON CAD ONLY
UG PART: GS7078-165B
(SPEC: 117E5074SH3)



AV04


LENGTH OF STRUT = 4 IN
PART OF STRUT = 0004
STRUT MOUNTED PERPENDICULAR
INDICATES CONDUIT SIZE

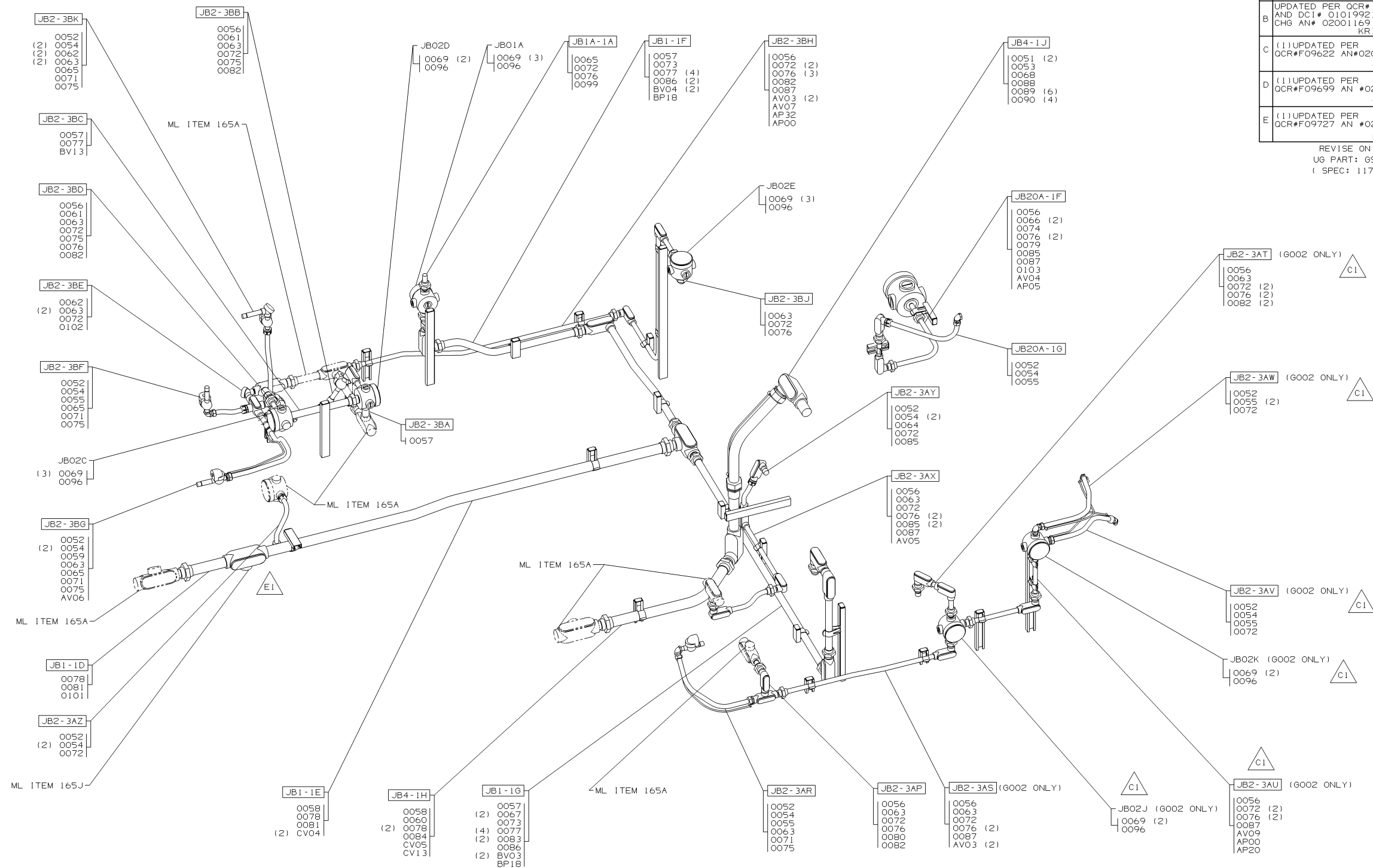


AP12
└─┬─┬─┐ LENGTH OF STRUT = 12 IN
└─┬─┬─┐ PART OF STRUT = 0012
└─┬─┬─┐ CONDUIT PARALLEL TO STRUT
└─┬─┬─┐ INDICATES CONDUIT SIZE

SUPPORT DETAILS



 GENERAL ELECTRIC COMPANY AND TURBINES Greenville, SC GE Power Generation	SIZE	CAGE CODE	DWG NO
	E		117E5074
DRAWN SARAVANAN, M	01-01-24		
ISSUED PANNEER MANI	01-02-01	SCALE NONE	SHEET 3



ISOMETRIC VIEW
(BACKGROUNDS REMOVED FOR CLARITY)

